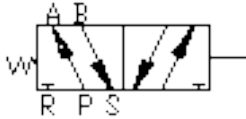

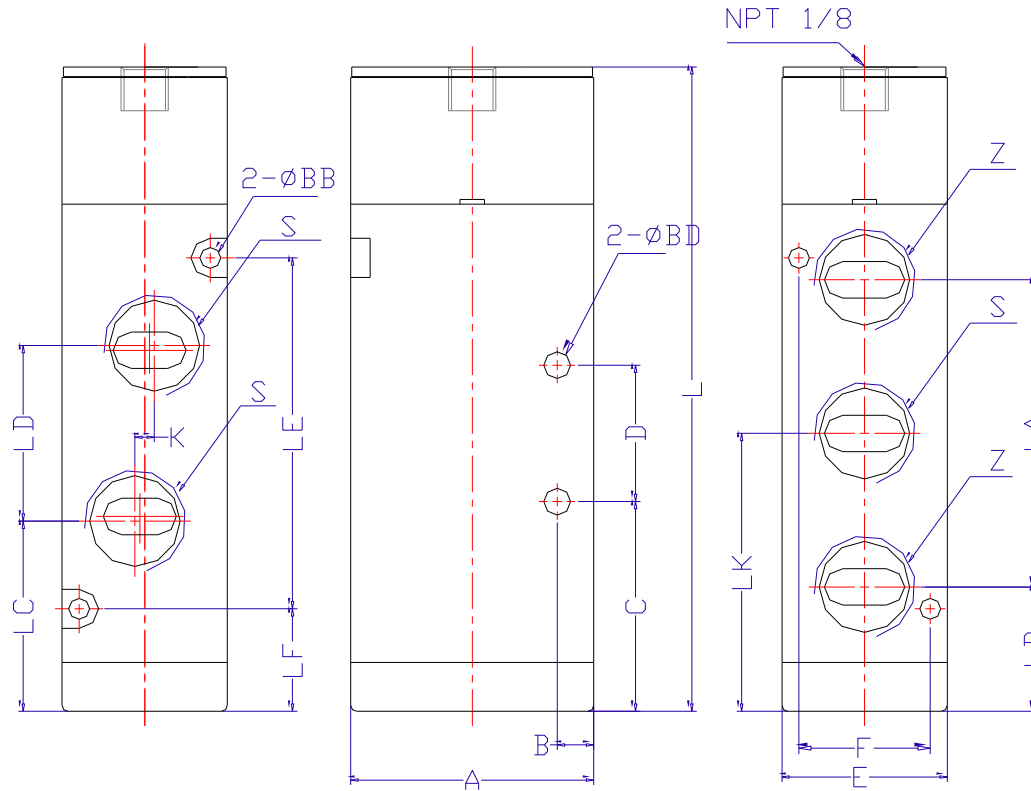


STC Pilot Operated Pneumatic Directional Control Valve: 4A110-410 Series Dimensions (UNIT=MM)



Part No.	Unit Price	Valve Picture	Port Size (NPT)	Description	Port No/ Position	Cv Flow Rate
4A110-1/8	\$19.75		1/8 NPT	4 Way 2 Position Single Pilot Air Valves	5/2 Four Way Valve	Cv = 0.67 25 SCFM @100 PSI
4A210-1/4	\$19.75		1/4 (inlet/outlet) 1/8 (Exhaust)			Cv = 0.78 53 SCFM @100 PSI
4A310-3/8	\$23.91		3/8 (inlet/outlet) 1/4 (Exhaust)			Cv = 1.68 80 SCFM @100 PSI
4A410-1/2	\$39.50		1/2 NPT			Cv = 2.79 160 SCFM @100 PSI

MODEL: 4A110; 4A210; 4A310; 4A410



Model	A	B	C	D	E	F	K	L	S	W	Z	BB	BD	LA	LB	LC	LD	LE	LF	LK
4A110-1/8	27	4.0	21.0	14	18	13	3	68.7	1/8	53.5	1/8	3.3	3.3	28	14.2	20.2	16	30	13.0	28.2
4A210-1/4	35	7.0	21.5	20	22	17	3	77.7	1/4	66.5	1/8	3.3	4.3	36	13.5	21.0	21	38	12.5	31.7
4A310-3/8	40	6.5	28.0	24	27	20	4	95.5	3/8	69	1/4	4.3	4.3	45	17.5	28.0	24	50	15.0	40.0
4A410-1/2	50	7.5	43.0	28	34	27	4	128	1/2	73.5	1/2	4.3	5.5	63	25.5	39.0	36	72	21.0	57.0